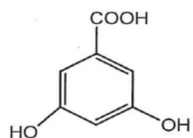


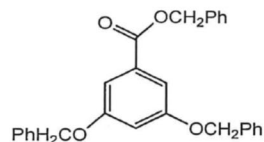
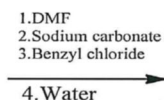
Manufacturing Process Flowchart Terbutaline Sulfate, USP (Cat# T1062)

STAGE-I DD to TS-II



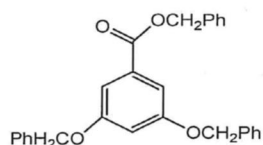
3,5-dihydroxybenzoic acid
 Chemical Formula: C₇H₆O₄
 Molecular Weight: 154.12

DD



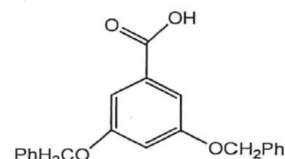
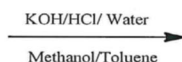
benzyl 3,5-bis(benzyloxy)benzoate or
 3,5 dibenzyloxy benzyl phenyl ester
 Chemical Formula: C₂₈H₂₄O₄
 Molecular Weight: 424.49

TS-I



benzyl 3,5-bis(benzyloxy)benzoate or
 3,5 dibenzyloxy benzyl phenyl ester
 Chemical Formula: C₂₈H₂₄O₄
 Molecular Weight: 424.49

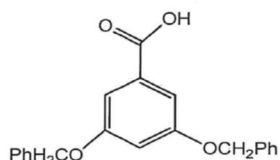
TS-I



3,5-bis(benzyloxy)benzoic acid or 3,5
 dibenzyloxy benzoic acid
 Chemical Formula: C₂₁H₁₈O₄
 Molecular Weight: 334.37

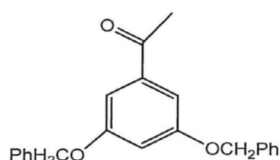
TS-II

STAGE-II TS-II to TS-V



3,5-bis(benzyloxy)benzoic acid or
 3,5 dibenzyloxy benzoic acid
 Chemical Formula: C₂₁H₁₈O₄
 Molecular Weight: 334.37

TS-II



1-(3,5-bis(benzyloxy)phenyl)ethanone or 3,5
 dibenzyloxy acetophenone
 Chemical Formula: C₂₂H₂₀O₃
 Molecular Weight: 332.39

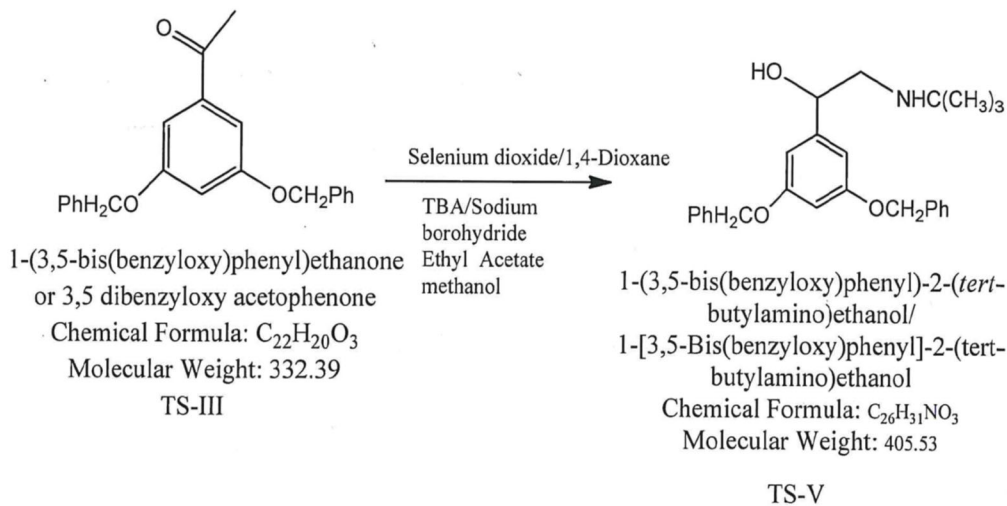
TS-III

CORPORATE HEADQUARTERS

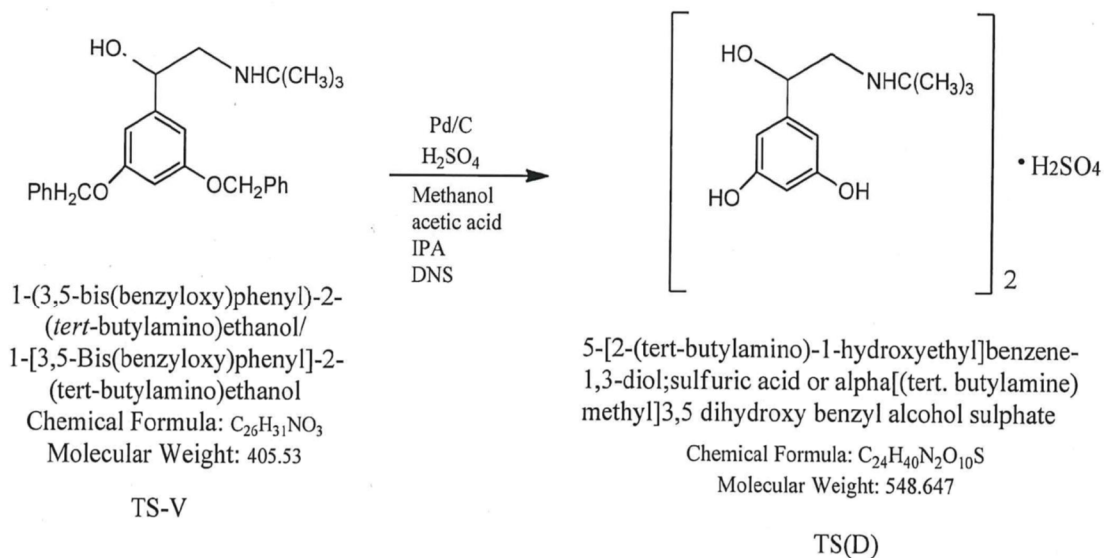
769 Jersey Avenue
 New Brunswick, NJ 08901
 PHONE 732.214.1300
 FAX 732.246.7132

WEST COAST FACILITY

14422 South San Pedro Street
 Gardena, California 90248
 PHONE 310.516.8000
 FAX 310.516.9843



STAGE-III TS-V to TS(D)



CORPORATE HEADQUARTERS

769 Jersey Avenue
New Brunswick, NJ 08901
PHONE 732.214.1300
FAX 732.246.7132

WEST COAST FACILITY

14422 South San Pedro Street
Gardena, California 90248
PHONE 310.516.8000
FAX 310.516.9843