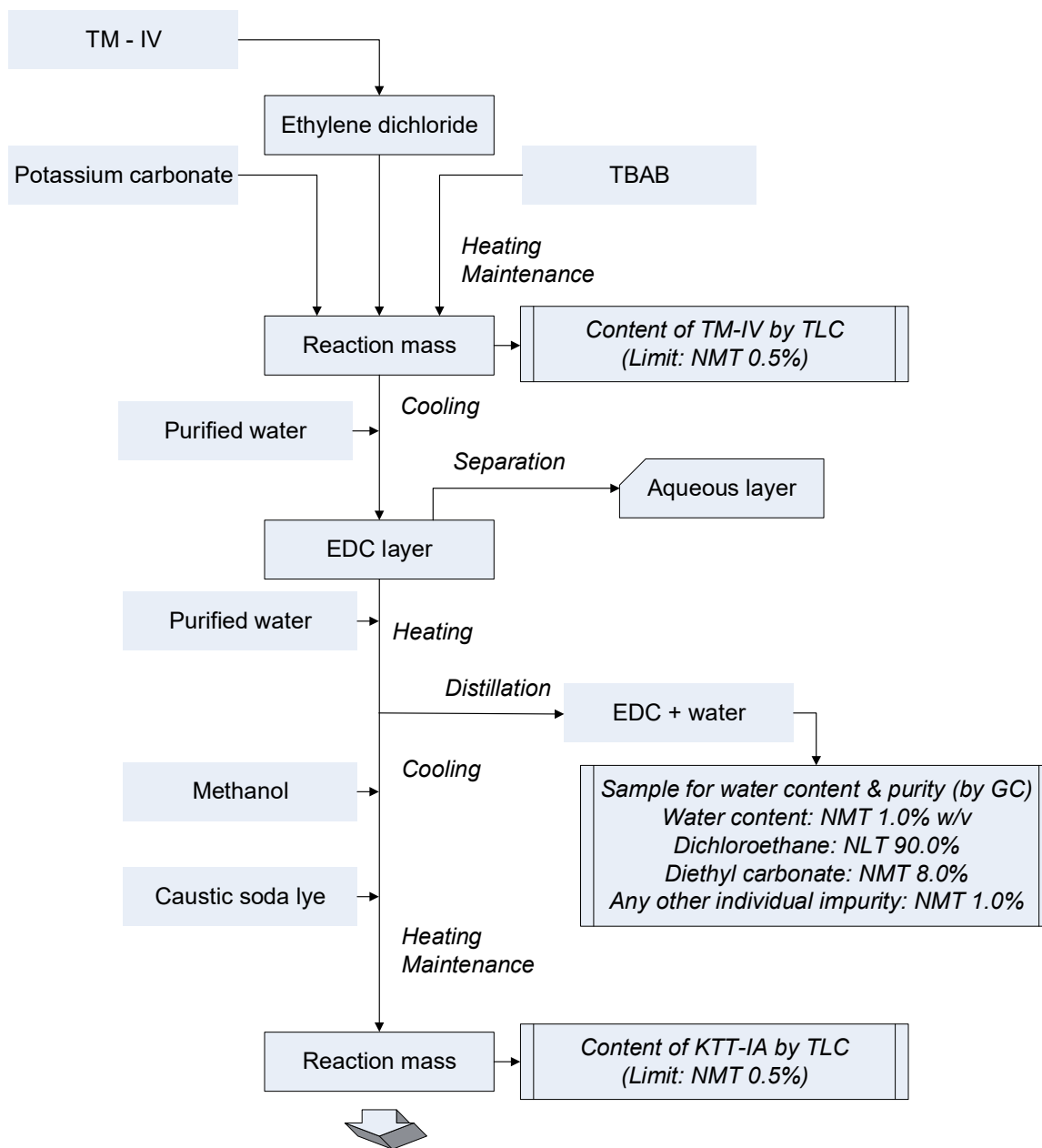


## Manufacturing Process Flowchart Ketorolac Tromethamine, USP – KE902

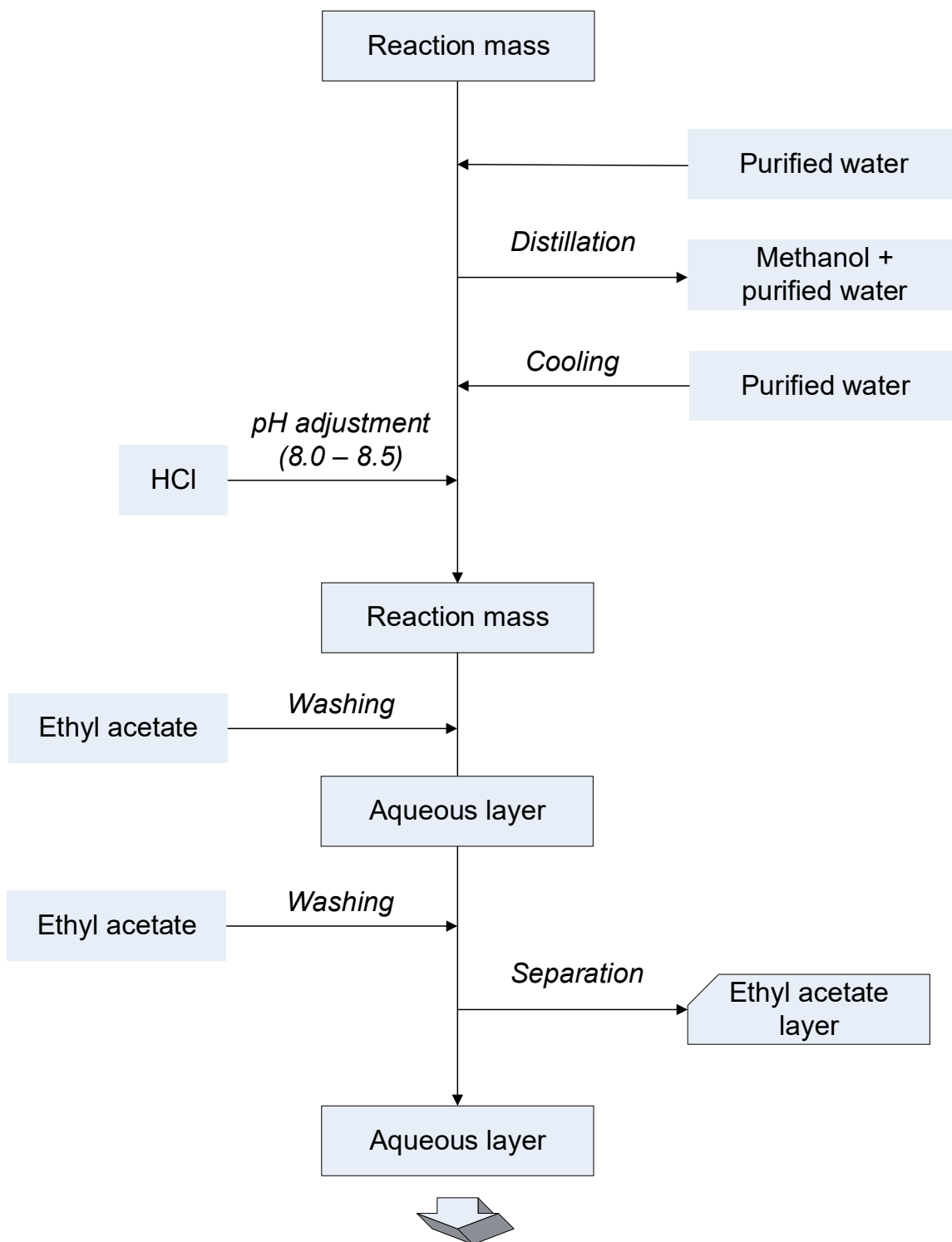


**CORPORATE HEADQUARTERS**

769 Jersey Avenue  
 New Brunswick, NJ 08901  
 PHONE 732.214.1300  
 FAX 732.246.7132

**WEST COAST FACILITY**

14422 South San Pedro Street  
 Gardena, California 90248  
 PHONE 310.516.8000  
 FAX 310.516.9843



CORPORATE HEADQUARTERS

769 Jersey Avenue

New Brunswick, NJ 08901

PHONE 732.214.1300

FAX 732.246.7132

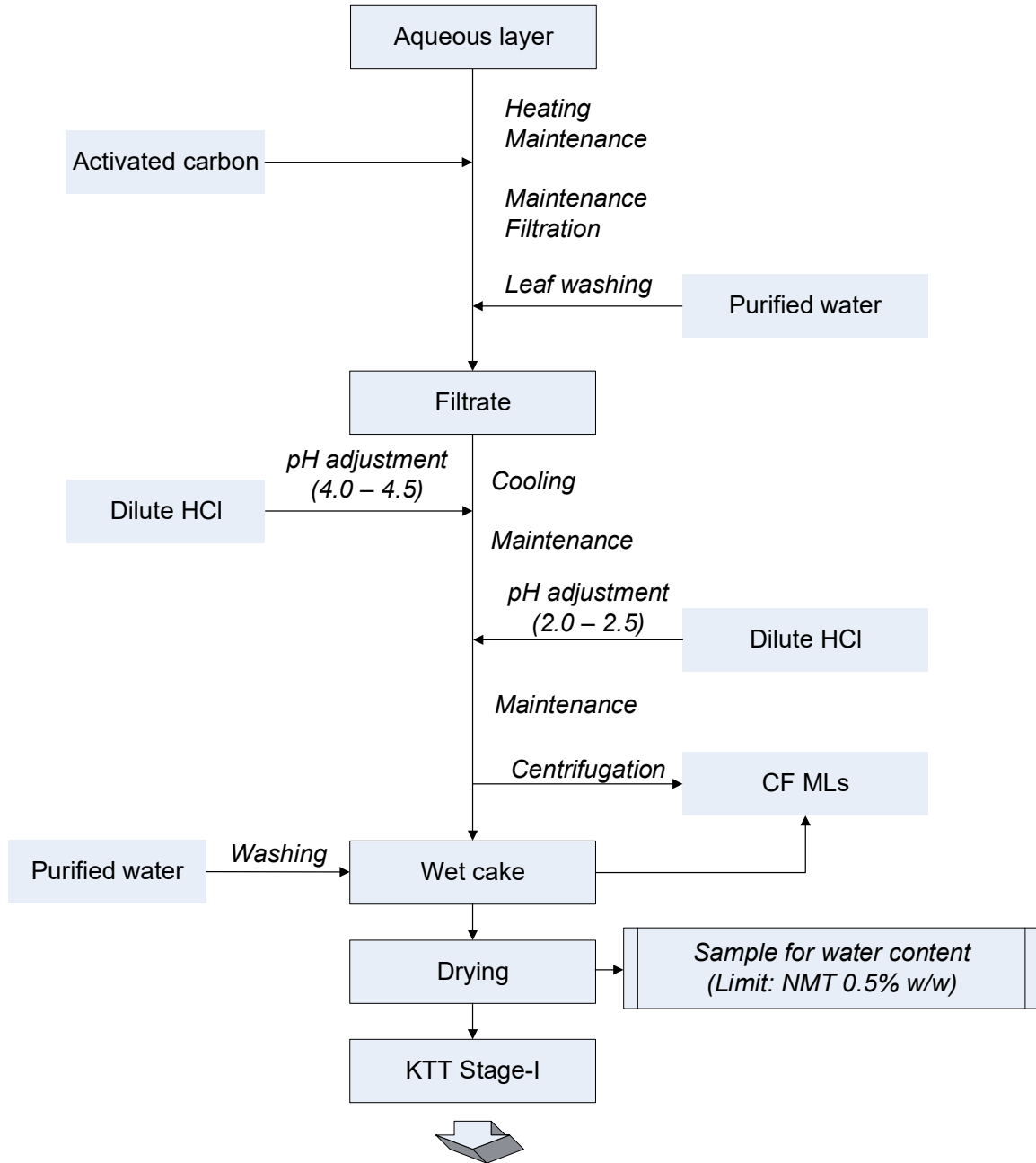
WEST COAST FACILITY

14422 South San Pedro Street

Gardena, California 90248

PHONE 310.516.8000

FAX 310.516.9843

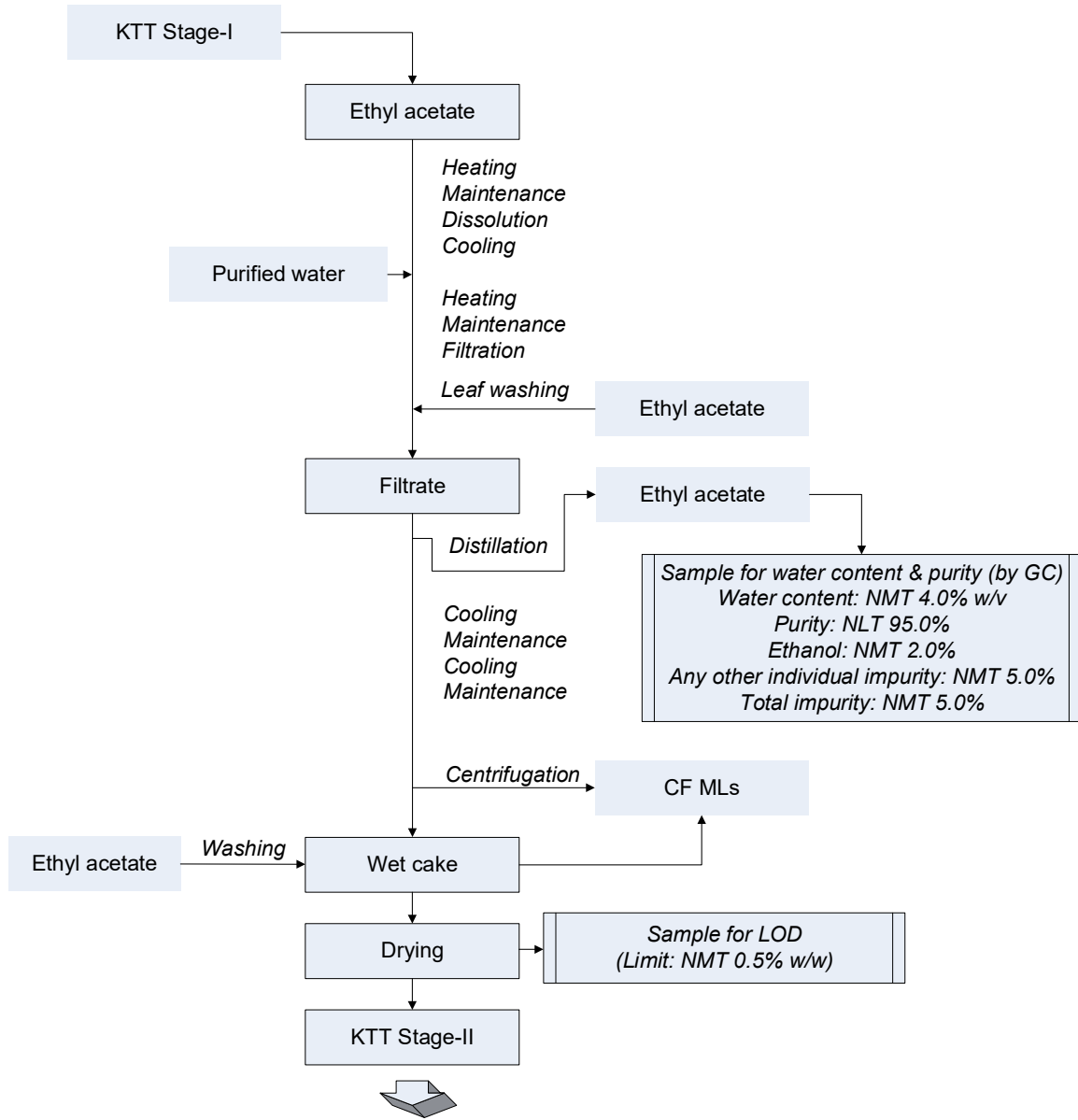


CORPORATE HEADQUARTERS

769 Jersey Avenue  
 New Brunswick, NJ 08901  
 PHONE 732.214.1300  
 FAX 732.246.7132

WEST COAST FACILITY

14422 South San Pedro Street  
 Gardena, California 90248  
 PHONE 310.516.8000  
 FAX 310.516.9843

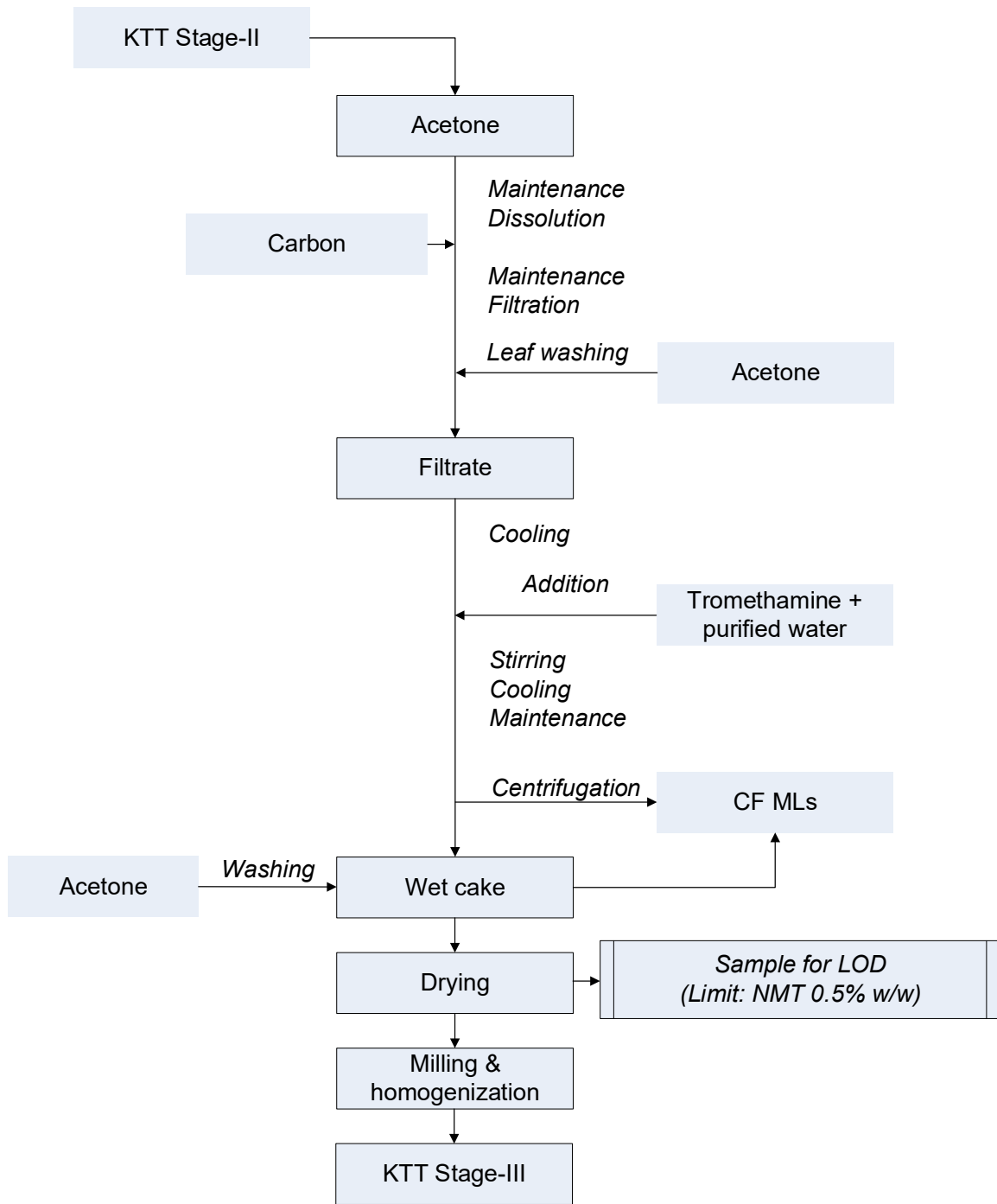


CORPORATE HEADQUARTERS

769 Jersey Avenue  
 New Brunswick, NJ 08901  
 PHONE 732.214.1300  
 FAX 732.246.7132

WEST COAST FACILITY

14422 South San Pedro Street  
 Gardena, California 90248  
 PHONE 310.516.8000  
 FAX 310.516.9843



CORPORATE HEADQUARTERS

769 Jersey Avenue  
 New Brunswick, NJ 08901  
 PHONE 732.214.1300  
 FAX 732.246.7132

WEST COAST FACILITY

14422 South San Pedro Street  
 Gardena, California 90248  
 PHONE 310.516.8000  
 FAX 310.516.9843