



# Scientific Documentation

SO155, Sodium Chloride, Granular, USP

Not appropriate for regulatory submission.  
Please visit [www.spectrumchemical.com](http://www.spectrumchemical.com) or  
contact Tech Services for the most up-to-date  
information contained in this information  
package.

## **Spectrum Chemical Mfg Corp**

769 Jersey Avenue  
New Brunswick, NJ 08901  
Phone 732.214.1300

Ver4.06 18.May.2021

**S0155**, Sodium Chloride, Granular, USP

## Table of Contents

- Product Specification
- Certificate of Analysis Sample(s)
- Safety Data Sheet (SDS)
- Certification of Current Good Manufacturing Practices (cGMP)
- Manufacturing Process Flowchart
- Source Statement
- BSE/TSE Statement
- Allergen Statement
- EU Fragrance Allergen Statement
- GMO Statement
- Melamine Statement
- Nitrosamine Statement
- Animal Testing Statement
- Organic Compliance Statement
- Shelf Life Statement
- Other Chemicals Statement
- Elemental Impurities Statement
- Residual Solvents Statement
- General Label Information – Sample Label

spectrum®

- General Lot Numbering System Guidance
- Halal Certificate
- Kosher Certificate

spectrum®

Item Number	SO155
Item	Sodium Chloride, Granular, USP
CAS Number	7647-14-5
Molecular Formula	NaCl
Molecular Weight	58.44
MDL Number	
Synonyms	Salt

Test	Specification	
	Min	Max
ASSAY (DRIED BASIS)	99.0	100.5 %
APPEARANCE OF SOLUTION	CLEAR COLORLESS	
ACIDITY OR ALKALINITY		0.5 ml
LOSS ON DRYING		0.5%
ALUMINUM		0.2 ppm
BROMIDES		100 ppm
PHOSPHATES		25 ppm
POTASSIUM		500 ppm
IODIDES	NO BLUE COLOR	
MAGNESIUM AND ALKALINE-EARTH METALS (as Ca)		100 ppm
ARSENIC (As)		1 ppm
IRON (Fe)		2 ppm
BARIUM (Ba)	OPALESCENCE LESS THAN REFERENCE	
FERROCYANIDES	NO BLUE COLOR	
SULFATE (SO <sub>4</sub> )		200 ppm
NITRITES		0.01
BACTERIAL ENDOTOXINS		5 IU/g
ELEMENTAL IMPURITIES	AS REPORTED	
IDENTIFICATION (A)	POSITIVE FOR SODIUM	
IDENTIFICATION (B)	PRECIPITATE DISSOLVES	
CERTIFIED KOSHER		
CERTIFIED HALAL		
APPEARANCE		
RETEST DATE		
DATE OF MANUFACTURE		
RESIDUAL SOLVENTS	-AS REPORTED	
MONOGRAPH EDITION		

## SAFETY DATA SHEET

Preparation Date: 2/24/2014

Revision date 7/23/2018

Revision Number: G3

### 1. IDENTIFICATION

#### Product identifier

**Product code:** SO155  
**Product Name:** SODIUM CHLORIDE, GRANULAR, USP

#### Other means of identification

**Synonyms:** Salt; Sea Salt  
Cloruro de sodio (Spanish)  
Sal (Spanish)  
Chlorure de sodium(French)  
Sel (French)

**CAS #:** 7647-14-5  
**RTECS #** VZ4725000  
**CI#:** Not available

#### Recommended use of the chemical and restrictions on use

**Recommended use:** Food preservative; in mineral waters; in soap manufacturing; home water softeners; highway deicing; regeneration of ion-exchange resins; in photography; in the production of chemicals; in ceramic glazes; metallurgy; curing hides; food seasoning; herbicide; fire extinguishing; in mouthwash.

**Uses advised against** No information available

**Supplier:** Spectrum Chemical Mfg. Corp  
14422 South San Pedro St.  
Gardena, CA 90248  
(310) 516-8000

**Order Online At:** <https://www.spectrumchemical.com>

**Emergency telephone number** Chemtrec 1-800-424-9300

**Contact Person:** Tom Tyner (USA - West Coast)

**Contact Person:** Ibad Tirmiz (USA - East Coast)

### 2. HAZARDS IDENTIFICATION

#### Classification

This chemical is not considered hazardous by the 2012 OSHA Hazard Communication Standard (29 CFR 1910.1200)

Not a dangerous substance or mixture according to the Globally Harmonized System (GHS)

#### Label elements

Not classified

**Hazards not otherwise classified (HNOC)**

Not Applicable

**Other hazards**

Not available

**3. COMPOSITION/INFORMATION ON INGREDIENTS**

Component	CAS No	Weight-%
Sodium Chloride	7647-14-5	100

**4. FIRST AID MEASURES**

**First aid measures**

- General Advice:** National Capital Poison Center in the United States can provide assistance if you have a poison emergency and need to talk to a poison specialist. Call 1-800-222-1222.
- Skin Contact:** Wash off immediately with soap and plenty of water removing all contaminated clothing and shoes. Get medical attention if irritation develops. Consult a physician if necessary.
- Eye Contact:** Flush eyes with water for 15 minutes. Get medical attention if irritation occurs. If symptoms persist, call a physician.
- Inhalation:** Move to fresh air. If not breathing, give artificial respiration. If breathing is difficult, give oxygen. Get medical attention.
- Ingestion:** Do not induce vomiting without medical advice. Never give anything by mouth to an unconscious person. Consult a physician if necessary.

**Most important symptoms and effects, both acute and delayed**

- Symptoms**
- May cause eye/skin irritation
  - Thirst
  - Dehydration
  - May affect the cardiovascular system
  - Central nervous system effects
  - May cause abdominal pain, nausea, vomiting, diarrhea

**Indication of any immediate medical attention and special treatment needed**

**Notes to Physician:** Treat symptomatically.

**Protection of first-aiders**

First-Aid Providers: Avoid exposure to blood or body fluids. Wear gloves and other necessary protective clothing. Dispose of contaminated clothing and equipment as bio-hazardous waste.

**5. FIRE-FIGHTING MEASURES**

**Extinguishing Media**

**Suitable Extinguishing Media:** The product is not flammable. If it is involved in a fire, extinguish the fire using an agent suitable for the type of surrounding fire.

**Unsuitable Extinguishing Media:** No information available.

## Specific hazards arising from the chemical

**Hazardous combustion products** No information available.

**Specific hazards** No information available.

## Special Protective Actions for Firefighters

**Specific Methods:** No information available

**Special Protective Equipment for Firefighters:** As in any fire, wear self-contained breathing apparatus pressure-demand, MSHA/NIOSH (approved or equivalent) and full protective gear

## 6. ACCIDENTAL RELEASE MEASURES

### Personal precautions, protective equipment and emergency procedures

**Personal Precautions:** Ensure adequate ventilation. Use personal protective equipment. Avoid contact with skin, eyes and clothing. Avoid dust formation.

**Environmental precautions** Prevent further leakage or spillage if safe to do so. Prevent entry into waterways, sewers, basements or confined areas.

### Methods and material for containment and cleaning up

**Methods for containment** Stop leak if you can do it without risk. Cover with plastic sheet to prevent spreading.

**Methods for cleaning up** Sweep up and shovel into suitable containers for disposal. Clean contaminated surface thoroughly.

## 7. HANDLING AND STORAGE

### Precautions for safe handling

#### **Technical Measures/Precautions:**

Provide sufficient air exchange and/or exhaust in work rooms. Avoid dust formation. Keep away from incompatible materials.

#### **Safe Handling Advice:**

Wear personal protective equipment. Avoid contact with skin, eyes and clothing. Keep away from heat and sources of ignition. Do not ingest. Do not breathe dust. Handle in accordance with good industrial hygiene and safety practice.

### Conditions for safe storage, including any incompatibilities

#### **Technical Measures/Storage Conditions:**

Hygroscopic. Keep container tightly closed in a dry and well-ventilated place. Store at room temperature in the original container. Store away from incompatible materials.

#### **Incompatible Materials:**

Strong oxidizing agents  
Strong acids  
Metals

## 8. EXPOSURE CONTROLS/PERSONAL PROTECTION

### Control parameters

**Product code:** SO155

**Product name:** SODIUM CHLORIDE,  
GRANULAR, USP

**Page** 3 / 11

## National occupational exposure limits

### United States

Component	CAS No	OSHA	NIOSH	ACGIH	AIHA WEEL
Sodium Chloride	7647-14-5	None	None	None	None

### Canada

Component	CAS No	Canada - Alberta	Canada - British Columbia	Canada - Ontario	Canada - Quebec
Sodium Chloride	7647-14-5	None	None	None	None

### Australia and Mexico

Component	CAS No	Australia	Mexico
Sodium Chloride	7647-14-5	None	None

## Appropriate engineering controls

### Engineering measures to reduce exposure:

Ensure adequate ventilation. Use process enclosures, local exhaust ventilation, or other engineering controls to keep airborne levels below recommended exposure limits. If user operations generate dust, fume or mist, use ventilation to keep exposure to airborne contaminants below the exposure limit.

## Individual protection measures, such as personal protective equipment

### Personal Protective Equipment

- Eye protection:** Goggles or Safety glasses with side-shields.
- Skin and body protection:** Long sleeved clothing  
Chemical resistant apron  
Gloves
- Respiratory protection:** No personal respiratory protective equipment normally required. Use a dust respirator under conditions where exposure to the substance is apparent (e.g. generation of high concentration of dust (dust clouds) , inadequate ventilation, development of respiratory tract irritation), and engineering controls are not feasible. Be sure to use an approved/certified respirator or equivalent.
- Hygiene measures:** Avoid contact with skin, eyes and clothing. Wash hands before breaks and immediately after handling the product When using, do not eat, drink or smoke.

## 9. PHYSICAL AND CHEMICAL PROPERTIES

**Physical state:**  
Solid

**Appearance:**  
Granular. Crystals. Crystalline.  
Crystalline powder.

**Color:**  
White.

**Odor:**  
No information available.

**Taste**  
Saline.

**Formula**  
NaCl

**Molecular/Formula weight (g/mole):**

**Product code:** SO155

**Product name:** SODIUM CHLORIDE,  
GRANULAR, USP

**Page** 4 / 11



58.44	<b>Flammability (solid, gas)</b> no data available	<b>Flashpoint (°C/°F):</b> No information available
<b>Flash Point Tested according to:</b> Not available	<b>Autoignition Temperature (°C/°F):</b> No information available	<b>Lower Explosion Limit (%):</b> No information available
<b>Upper Explosion Limit (%):</b> No information available	<b>Melting point/range(°C/°F):</b> 801°C/1473 °F	<b>Decomposition temperature(°C/°F):</b> No information available
<b>Boiling point/range(°C/°F):</b> 1413 °C/2575.4 °F	<b>Bulk density:</b> No information available	<b>Density (g/cm3):</b> No information available
<b>Specific gravity:</b> 2.165	<b>pH</b> No information available	<b>Vapor pressure @ 20°C (kPa):</b> No information available
<b>Evaporation rate:</b> No information available	<b>Vapor density:</b> No information available	<b>VOC content (g/L):</b> No information available
<b>Odor threshold (ppm):</b> No information available	<b>Partition coefficient (n-octanol/water):</b> No information available	<b>Viscosity:</b> No information available
<b>Miscibility:</b> No information available	<b>Solubility:</b> Freely soluble in water Soluble in Glycerol Very slightly soluble in Ethanol Insoluble in Hydrochloric acid	

## 10. STABILITY AND REACTIVITY

### Reactivity

Reactive with oxidizing agents

Reactive with metals

Reactive with acids

Reacts with most nonnoble metals such as iron or steel, building materials (such as cement)Sodium chloride is rapidly attacked by bromine trifluoride. Violent reaction with lithium.

Electrolysis of sodium chloride in presence of nitrogenous compounds to produce chlorine may lead to formation of explosive nitrogen trichloride.Potentially explosive reaction with dichloromaleic anhydride + urea.

### Chemical stability

**Stability:** Stable under recommended storage conditions.

**Possibility of Hazardous Reactions:** Hazardous polymerization does not occur

**Conditions to avoid:** Heat. Ignition sources. Exposure to moisture. Exposure to moist air. Incompatible materials.

**Incompatible Materials:** Strong oxidizing agents  
Strong acids  
Metals

**Hazardous decomposition products:** No information available.

### Other Information

**Corrosivity:** No information available

**Special Remarks on Corrosivity:** No information available

## 11. TOXICOLOGICAL INFORMATION

### Information on likely routes of exposure

#### Principal Routes of Exposure:

Ingestion. Inhalation.

### Acute Toxicity

#### Component Information

Sodium Chloride	
CAS No	7647-14-5

**LD50/oral/rat** = 3 g/kg Oral LD50 Rat  
**LD50/oral/mouse** = 4 g/kg  
**LD50/dermal/rabbit** = > 10 g/kg Dermal LD50  
**LD50/dermal/rat** = No information available  
**LC50/inhalation/rat** = >42 g/m<sup>3</sup> Inhalation LC50 Rat 1 h  
**LC50/inhalation/mouse** = No information available  
**Other LD50 or LC50 information** = No information available

#### Product Information

**LD50/oral/rat** =  
**Value - Acute Toxicity** = 3000 mg/kg

**LD50/oral/mouse** =  
**Value - Acute Tox** = 4000 mg/kg

**LD50/dermal/rabbit**  
**Value - Acute Toxicity** = > 10000 mg/kg

**LD50/dermal/rat**  
**VALUE - Acute Tox** = No information available

**LC50/inhalation/rat**  
**VALUE-Vapor** = No information available  
**VALUE-Gas** = No information available  
**VALUE-Dust/Mist** = 42000 mg/m<sup>3</sup>

**LC50/Inhalation/mouse**  
**VALUE-Vapor** = No information available  
**VALUE - Gas** = No information available  
**VALUE - Dust/Mist** = No information available

### Symptoms

**Skin Contact:** May cause skin irritation.

**Eye Contact:** May cause eye irritation. Slight to moderate transient eye irritation.

**Inhalation** May cause irritation of respiratory tract.

**Ingestion** Ingestion of large quantities can irritate the stomach (as in overuse of salt tablets). May cause abdominal pain, nausea, vomiting, diarrhea. May cause dehydration. May cause thirst. May affect the cardiovascular system (hypotension or

hypertension, tachycardia). May affect metabolism (changes in sodium level). May increase sodium levels. May affect behavior/central nervous system (muscle spasticity/contraction, somnolence, headache, irritability, restlessness, dizziness, convulsions/seizures, coma).

**Aspiration hazard** No information available.

**Delayed and immediate effects as well as chronic effects from short and long-term exposure**

**Chronic Toxicity** No information available.

**Sensitization:** No information available.

**Mutagenic Effects:** May affect genetic material  
Mutagenic effects in mammalian somatic cells  
Mutations in microorganisms

**Carcinogenic effects:** No information available.

Component	CAS No	IARC	ACGIH - Carcinogens	NTP	OSHA HCS - Carcinogens	Australia - Notifiable Carcinogenic Substances	Australia - Prohibited Carcinogenic Substances
Sodium Chloride	7647-14-5	Not listed	Not listed	Not listed	Not listed	Not listed	Not listed

*ACGIH (American Conference of Governmental Industrial Hygienists)*

*IARC (International Agency for Research on Cancer)*

*NTP (National Toxicology Program)*

*OSHA (Occupational Safety and Health Administration of the US Department of Labor)*

**Reproductive toxicity** No data is available

**Reproductive Effects:** No information available

**Developmental Effects:** No information available

**Teratogenic Effects:** No information available

**Specific Target Organ Toxicity**

**STOT - single exposure** No information available.

**STOT - repeated exposure** No information available.

**Target Organs:** No information available.

**12. ECOLOGICAL INFORMATION**

**Ecotoxicity**

**Ecotoxicity effects:** Aquatic environment.

*Sodium Chloride - 7647-14-5*

**Fish**

5560 - 6080 mg/L LC50 Lepomis macrochirus 96 h flow-through 1 12946 mg/L LC50 Lepomis macrochirus 96 h static 1 6020 - 7070 mg/L LC50 Pimephales promelas 96 h static 1 7050 mg/L LC50 Pimephales promelas 96 h semi-static 1 6420 - 6700 mg/L LC50 Pimephales promelas 96 h static 1 4747 - 7824 mg/L LC50 Oncorhynchus mykiss 96 h flow-through 1

**Crustacea**

1000 mg/L EC50 Daphnia magna 48 h 340.7 - 469.2 mg/L EC50 Daphnia magna

48 h

**Persistence and degradability:** No information available

**Bioaccumulative potential:** No information available.

**Mobility in soil** No information available

**Other adverse effects** No information available.

### 13. DISPOSAL CONSIDERATIONS

#### Disposal Methods

**Waste from residues / unused products:**

Waste must be disposed of in accordance with Federal, State and Local regulation.

**Contaminated packaging:**

Empty containers should be taken for local recycling, recovery or waste disposal

Component	CAS No	RCRA - F Series Wastes	RCRA - K Series Wastes	RCRA - P Series Wastes	RCRA - U Series Wastes
Sodium Chloride	7647-14-5	None	None	None	None

### 14. TRANSPORT INFORMATION

#### DOT

**UN-No:** Not Regulated  
**Proper Shipping Name:** No information available  
**Hazard Class** No information available  
**Subsidiary Class** No information available  
**Packing group:** No information available  
**Emergency Response Guide Number** No information available  
**Marine Pollutant** No data available  
**DOT RQ (lbs):** No information available  
**Special Provisions** No Information available  
**Symbol(s):** No information available  
**Description:** No information available

#### TDG (Canada)

**UN-No:** Not Regulated  
**Proper Shipping Name:** No information available  
**Hazard Class** No information available  
**Subsidiary Risk:** No information available  
**Packing Group:** No information available  
**Marine Pollutant** No Information available  
**Description:** No information available

#### ADR

**UN Number** Not regulated  
**Proper Shipping Name:** No information available  
**Transport hazard class(es)** No information available  
**Packing group** No information available  
**Subsidiary Risk:** No information available

#### IMDG

**UN-No:** Not Regulated  
**Proper Shipping Name:** No information available  
**Hazard Class:** No information available  
**Subsidiary Risk:** No information available  
**Packing Group:** No information available  
**Marine Pollutant** No information available

**RID**

**UN Number** Not Regulated  
**Proper Shipping Name:** No information available  
**Transport hazard class(es)** No information available  
**Subsidiary Risk:** No information available  
**Packing group** No information available

**ICAO (air)**

**UN-No:** Not Regulated  
**Proper Shipping Name:** No information available  
**Hazard Class** No information available  
**Subsidiary Risk:** No information available  
**Packing Group:** No information available

**IATA**

**UN Number** Not Regulated  
**Proper Shipping Name:** No information available  
**Transport hazard class(es)** No information available  
**Subsidiary Risk:** No information available  
**Packing group** No information available  
**Precautionary Statements - Response** No information available  
**Special Provisions** No information available

<b>15. REGULATORY INFORMATION</b>
-----------------------------------

**International Inventories**

Component	CAS No	U.S. TSCA	KOREA KECL	Philippines (PICCS)	Japan ENCS	China IECSC	Australia (AICS)	EINECS-No.
<i>Sodium Chloride</i>	7647-14-5	PresentACTIVE	Present KE-31387	Present	Present (1)-236	Present	Present	Present 231-598-3

**U.S. Regulations**

*Sodium Chloride*

**FDA - Food Additives Generally Recognized as Safe (GRAS):** 21 CFR 182.70,21 CFR 182.90

**FDA - 21 CFR - Total Food Additives - List Sourced from EAFUS** 100.155, 101.22, 101.61, 131.111, 131.112, 131.160, 131.162, 131.170, 133.106, 133.113, 133.121, 133.123, 133.124, 133.127, 133.129, 133.133, 133.136, 133.138, 133.141, 133.147, 133.150, 133.153, 133.155, 133.156, 133.162, 133.165, 133.169, 133.173, 133.179, 133.181, 133.182, 133.183, 133.184, 133.186, 133.187, 133.188, 133.189, 133.190, 133.195, 136.110, 137.180, 139.110, 139.150, 145.110, 145.130, 150.110, 155.120, 155.130, 155.190, 155.191, 155.194, 155.200, 155.201, 155.3, 156.145, 156.3, 158.170, 161.130, 161.145, 161.170, 161.173, 161.190, 163.111, 163.112, 163.113, 163.123, 163.130, 166.110, 168.130, 168.140, 168.160, 168.180, 169.115, 169.140, 169.150, 172.177, 172.430, 172.490, 172.840, 172.861, 182.1, 182.70, 182.90

**California Prop. 65: Safe Drinking Water and Toxic Enforcement Act of 1986.**

**Chemicals Known to the State of California to Cause Cancer:**

This product does not contain a chemical requiring a warning under California Prop. 65. (See table below)

**Chemicals Known to the State of California to Cause Reproductive Toxicity:**

This product does not contain a chemical requiring a warning under California Prop. 65. (See table below)

Component	CAS No	Carcinogen	Developmental Toxicity	Male Reproductive Toxicity	Female Reproductive Toxicity:
Sodium Chloride	7647-14-5	Not Listed	Not Listed	Not Listed	Not Listed

**CERCLA/SARA**

Component	CAS No	CERCLA - Hazardous Substances and their Reportable Quantities	Section 302 Extremely Hazardous Substances and TPQs	Section 302 Extremely Hazardous Substances and RQs	Section 313 - Chemical Category	Section 313 - Reporting de minimis
Sodium Chloride	7647-14-5	None	None	None	None	None

**U.S. TSCA**

Component	CAS No	TSCA Section 5(a)2 - Chemicals With Significant New Use Rules (SNURS)	TSCA 8(d) -Health and Safety Reporting
Sodium Chloride	7647-14-5	Not Applicable	Not Applicable

**Canada****WHMIS 2015 - GHS Classifications**

WHMIS 2015 Hazard Classification Information:

Component  
Sodium Chloride  
7647-14-5 ( 100 )

WHMIS 2015 Hazard Classification  
Not a dangerous product according to HPR classification criteria

**Canada Hazardous Products Regulation** This product has been classified according to the hazard criteria of the HPR (Hazardous Products Regulation) and the SDS contains all of the information required by the HPR

**DSL/NDSL**

Component	CAS No	Canada (DSL)	Canada (NDSL)
Sodium Chloride	7647-14-5	Present	Not Listed

Component	CAS No	CEPA Schedule I - Toxic Substances
Sodium Chloride	7647-14-5	Not listed
Component	CAS No	CEPA - 2010 Greenhouse Gases Subject to Mandatory Reporting
Sodium Chloride	7647-14-5	Not listed

**EU Classification****EU GHS - SV - CLP 1272/2008**

Component	CAS No	EU GHS - SV - CLP (1272/2008)
Sodium Chloride	7647-14-5	

**EU - CLP (1272/2008)****R-phrases(s)**

**Product code:** SO155

**Product name:** SODIUM CHLORIDE,  
GRANULAR, USP

**Page** 10 / 11

not determined (not applicable)

**S -phrase(s)**

none

Component	CAS No	Classification	Concentration Limits:	Safety Phrases
Sodium Chloride	7647-14-5		No information	

**The product is classified in accordance with Annex VI to Directive 67/548/EEC**

**Indication of danger:**

Not dangerous

**16. OTHER INFORMATION**

**Preparation Date:** 2/24/2014  
**Revision date** 7/23/2018  
**Prepared by:** Sonia Owen

**Disclaimer:**

All chemicals may pose unknown hazards and should be used with caution. This Safety Data Sheet (SDS) applies only to the material as packaged. If this product is combined with other materials, deteriorates, or becomes contaminated, it may pose hazards not mentioned in this SDS. The physical properties reported in this SDS are obtained from the literature and do not constitute product specifications. Information contained herein does not constitute a warranty, whether expressed or implied, as to the safety, merchantability or fitness of the goods for a particular purpose. Spectrum Chemicals & Laboratory Products, Inc. assumes no responsibility for results obtained or for incidental or consequential damages, including lost profits, arising from the use of these data. No warranty against infringement of any patent, copyright or trademark is made or implied. It shall be the user's responsibility to develop proper methods of handling and personal protection based on the actual conditions of use. While this SDS is based on technical data judged to be reliable, Spectrum assumes no responsibility for the completeness or accuracy of the information contained herein.

**End of Safety Data Sheet**



**Certification of Compliance with current Good Manufacturing Practices**

Dear Valued Customer:

Spectrum Chemical Mfg Corp certifies that the following product(s) is produced, processed, packaged and held in compliance with current Good Manufacturing Practices (cGMP) in accordance with the applicable parts of 21 CFR, parts 210 and 211 of the Code of Federal Regulations.

Catalog Number	Product Name
SO155	Sodium Chloride, Granular, USP

Spectrum is an FDA registered and inspected Drug Establishment. Our United States Food and Drug Administration (USFDA) Registration numbers are as follows:

Spectrum-Gardena, CA: 2020632  
Spectrum-New Brunswick, NJ: 2246824

Thank you for your interest in Spectrum products. If we may be of further assistance, please feel free to contact the Quality Assurance department at 310-516-8000 or via email at [qualityassurance@spectrumchemical.com](mailto:qualityassurance@spectrumchemical.com)

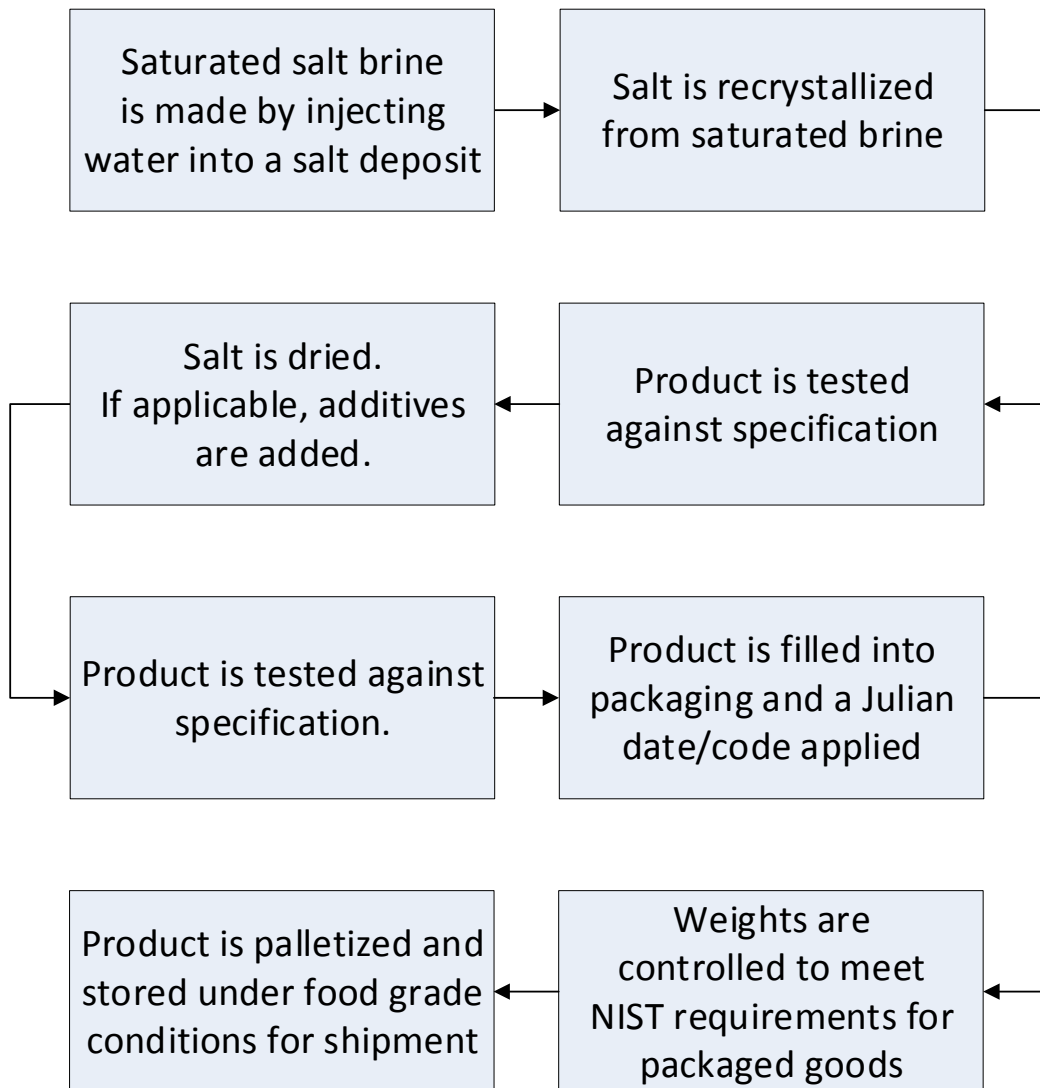
Sincerely,

Oralia Chavez  
Quality Assurance Specialist



## Manufacturing Process Flowchart

### Sodium Chloride, Granular, USP - SO155



#### ***Spectrum Chemical Mfg Corp***

***Corporate Headquarters:***

769 Jersey Ave.  
New Brunswick, NJ 08901  
732.214.1300

***West Coast Facility:***

14422 S. San Pedro St.  
Gardena, CA 90248  
310.516.8000

## SO155, Sodium Chloride, Granular, USP

### Source Statement

The above mentioned catalog item is derived from solution mining of bedded salt deposits. No animal or plant derived products are used in the manufacturing process.

### BSE/TSE Statement

The above mentioned catalog item does not contain nor is manufactured using any animal derived products and is therefore, BSE/TSE free.

### Allergen Statement

The above mentioned catalog item does not contain any of the following:

- Milk
- Egg
- Fish
- Shellfish
- Tree Nuts
- Wheat
- Cereals containing Gluten
- Soy
- Mustard
- Sesame Seed
- Peanuts
- Sulfites > 10 ppm

### EU Fragrance Allergen Statement

The above mentioned catalog item does not contain any of the 26 EU fragrance allergens listed in Annex III lines 67-92. These substances are not intentionally added to the following chemical and therefore are not expected to be present.

### GMO Statement

The above mentioned catalog item is manufactured without the use of genetically modified organisms and is therefore GMO free.

### Melamine Statement

The above mentioned catalog does not use or add melamine to the manufacturing process and is considered melamine-free.

## Nitrosamine Statement

Based on knowledge of the manufacturing process, nitrosamine impurities are not known or suspected to be present in this material.

## Animal Testing Statement

The above mentioned catalog item has not been tested on animals.

## Organic Compliance Statement

The above mentioned catalog item has not been produced using GMOs, irradiation, ethylene oxide (EtO) or sewage sludge.

## Shelf Life Statement

The above mentioned catalog item is typically assigned a shelf life of 36 months from the date of manufacture. The actual assigned shelf life for any specific lot should be referenced on the Certificate of Analysis.

## Other Chemicals Statement

Spectrum does not have any reason to suspect the above mentioned catalog item contains any of the following chemicals. This product does not come into contact with these chemicals during packaging or storage:

- Aflatoxins
- Antibiotics
- Bisphenol A (BPA)
- CMR Substances
- Parabens
- Pesticides
- Phthalates
- Preservatives



**RE: Elemental Impurities - Sodium Chloride, Granular, USP (Cat# SO155)**

To Whom It May Concern:

Thank you for your interest in Spectrum high quality chemicals.

The above material complies with the USP<232>, <233> Elemental Impurities and the ICH Q3D Elemental Impurities Guideline. Per the current supply chain, the following elemental impurities are likely to be present:

Elemental Impurity		Class	Expected Concentration
Arsenic	As	1	< 1 ppm (USP monograph)

Other elemental impurities considered by USP <232>, <233> and ICH Q3D which are not addressed in the above mentioned table are not likely to be present. These substances are not used in the production process, are not intentionally added or known to be present in the above mentioned material.

This information is subject to change and is intended for risk assessment only. It is responsibility of the end user to evaluate suitability of any chemical for the intended use as well as to assess compound-specific limits of daily intake of metal impurities.

For lot-specific information, please refer to the respective Certificate of Analysis.

If you have any further questions, please contact us by telephone at 1(800)772-8786 Option 2, or by email at [TechServices@spectrumchemical.com](mailto:TechServices@spectrumchemical.com).

Sincerely,

Technical Services  
Spectrum Chemical Mfg. Corp.

This document has been produced electronically and is valid without a signature.

CORPORATE HEADQUARTERS

769 Jersey Avenue  
New Brunswick, NJ 08901  
PHONE 732.214.1300  
FAX 732.246.7132

WEST COAST FACILITY

14422 South San Pedro Street  
Gardena, California 90248  
PHONE 310.516.8000  
FAX 310.516.9843



**RE: Residual Solvents - Sodium Chloride, Granular, USP (Cat# SO155)**

To Whom It May Concern:

Thank you for your interest in Spectrum high quality chemicals.

The above mentioned catalog item complies with the requirements of the USP <467> Residual Solvents and the ICH Q3C Residual Solvents Guideline. No Class 1, Class 2, Class 3 or other solvents are used or produced in the manufacture of this product.

For lot-specific information, please refer to the respective Certificate of Analysis.

If you have any further questions, please contact us by telephone at 1(800)772-8786 Option 2, or by email at [TechServices@spectrumchemical.com](mailto:TechServices@spectrumchemical.com).

Sincerely,

Technical Services  
Spectrum Chemical Mfg. Corp.

This document has been produced electronically and is valid without a signature.

CORPORATE HEADQUARTERS

769 Jersey Avenue  
New Brunswick, NJ 08901  
PHONE 732.214.1300  
FAX 732.246.7132

WEST COAST FACILITY

14422 South San Pedro Street  
Gardena, California 90248  
PHONE 310.516.8000  
FAX 310.516.9843

## Label Information

The Spectrum label presents technical and safety information in an easily understood format. Our technical specialists stay abreast of the latest requirements of the Globally Harmonized System for Classification and Labelling of Chemicals (GHS), as well as the Occupational Safety and Health Administration (OSHA), the Food and Drug Administration (FDA) and other government regulatory agencies in order to ensure compliance, accuracy and concise hazard communication.

**Retest Date: 03-31-2025**

**USE CARE:** This material has been evaluated per GHS/OSHA criteria and is not classified as hazardous. All chemicals may pose unknown hazards and must be used with caution. Use personal protection and safe handling methods consistent with proper workplace safety practices. Consult SDS for additional properties and precautions. If adverse reaction occurs seek medical attention.

**KEEP FROM CHILDREN**

**CAUTION:** For manufacturing, processing or repacking. Further processing and testing required for use in parenteral applications. **Read and understand the label and Safety Data Sheet (SDS) prior to use.**

**Chemical Emergency: (800)424-9300**  
www.SpectrumChemical.com

**NaCl** F.W. 58.44

Not sterile.

Manufacturer/Supplier Code ..... ?  
Manufacturer Lot Number ..... ?

Assay (Dried Basis) ..... 99.0-100.5%  
Appearance of Solution ..... To pass test  
Acidity or Alkalinity ..... To pass test

**MAXIMUM LIMITS**

Loss on Drying	0.5%	Iron (Fe)	2 ppm
Aluminum	0.2 ppm	Barium (Ba)	To pass test
Bromides	100 ppm	Ferrocyanides	To pass test
Phosphates	25 ppm	Sulfate (SO <sub>4</sub> )	200 ppm
Potassium	500 ppm	Nitrites	To pass test
Iodides	To pass test	Bacterial Endotoxins	5 IU/g
Magnesium and Alkaline Earth Metals (as Ca)	100 ppm	Elemental Impurities	As reported
Arsenic (As)	1 ppm	Residual Solvents	To pass test

HYGROSCOPIC: Keep tightly closed.

**WARNING:** Cancer and Reproductive Harm - www.P65Warnings.ca.gov

Repackaged by Spectrum as: Lot No. 062233

G 18/16GHS-A A O

**SPECTRUM CHEMICAL MFG. CORP.** Gardena, CA 90248 • New Brunswick, NJ 08901

- A** Bar Code
- B** GHS Hazard Pictograms
- C** Warning, Safety Data and Precautionary Information
- D** Product Catalog Number
- E** Item Name, Form, Grade
- F** Size/Quantity
- G** Chemical Abstracts Service (CAS) Registry Number
- H** Caution Information
- I** DOT Shipping Information
- J** Toll-Free 24-Hour Chemical Emergency Telephone Number
- K** Empirical Formula, Formula Weight and Technical Specifications Panel
- L** Expiration Information
- M** Lot Number
- N** Kosher Certified by Kosher Supervision of America (KSA).
- O** Storage Color Band
- P** Halal Certified by IFANCA
- Q** bioCertified

This color-coded band indicates the hazard most likely to be posed by that material under storage conditions. The criteria used to assign band colors have been established by the Storage Code working group of the Society for Chemical Hazard Communication (SCHC). It is recommended that like colors be stored together, unless otherwise stated, based on the color codes indicated to the right. However, it is the responsibility of the customer to check with their local fire department for possible conflicts with our recommendations when storing hazardous chemicals.

- **YELLOW:** Oxidizer
- **RED:** Flammable
- **GREEN:** General Storage
- **BLUE:** Health Hazard
- WHITE:** Corrosive

### Spectrum Chemical Mfg Corp

**Corporate Headquarters:**  
769 Jersey Ave.  
New Brunswick, NJ 08901  
732.214.1300

**West Coast Facility:**  
14422 S. San Pedro St.  
Gardena, CA 90248  
310.516.8000



المجلس الإسلامي الأمريكي للغذاء و التغذية  
THE ISLAMIC FOOD AND NUTRITION COUNCIL OF AMERICA

IFANCA HALAL PRODUCT CERTIFICATE شهادة حلال

This is to certify that the following product(s) have been produced under the supervision of the Islamic Food and Nutrition Council of America(IFANCA). The production facility as well as component ingredients have been reviewed and approved. The product(s) are in compliance with the halal requirements under Islamic laws.

Date: July 16, 2020

Document #: 11205.11209.II201371

Company Name & Address: **Spectrum Laboratory Products, Inc.** 755-769 Jersey Ave New Brunswick, New Jersey 08901 USA

Plant Name & Address: **Spectrum Laboratory Products, Inc.** 14422 South San Pedro Street Gardena, California 90248 USA

ProductName	Product Code	Halal-ID	Product Certificate #
1. Sodium Chloride, Granular, USP	SO155	B94057	HC-20SPQ323

*Muhammad Munir Chaudry*  
Muhammad Munir Chaudry, Ph.D.  
President



This Certificate is valid until **August 31, 2021** and subject to renewal at that time.



Page 1 of 1



KOSHER SUPERVISION OF AMERICA

בס"ד  
Jan 28, 2021

The following product(s) prepared by the named company are certified kosher with the stated requirements:

**Spectrum Laboratory Products, Inc.**

S-0032

14422 S. San Pedro Street  
Gardena CA 90248  
USA

**Product Name** SO155, Sodium Chloride, Granular, USP

**Brand** Spectrum

**UKD-ID** KSAV3-F7P2W5

**D/P/M** P

**Symbol Required** KSA

**Special Conditions**

This certificate expires on  
**Feb 01, 2022**

Rabbi Binyomin Lisbon  
Kashrus Administrator

Placing the KSA logo on products not listed above constitutes an un-authorized use of the KSA symbol, which is a federally registered trademark.