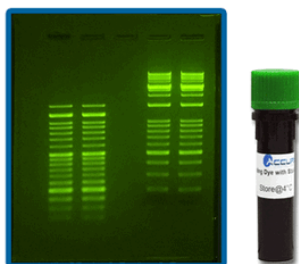


Accuris SmartGlow Pre-stain and Loading Dye

Description • SmartGlow PS (Pre-stain) can be used as a direct replacement for Ethidium Bromide in agrose and polyacrylamide gel electrophoresis

- The stain emits green fluorescence when bound to dsDNA or ssDNA and emits red fluorescence when bound to RNA. SmartGlow PS exhibits excitation peaks at 290 nm and 490 nm, allowing it to be used with UV and blue light



- SmartGlow LD (Loading Dye) is supplied at 6X concentration and is added directly to the samples

- No dye needs to be added to the gel or running buffer
- After electrophoretic separation, view and document your results using a UV or blue light illuminator. SmartGlow LD emits green fluorescence when bound to dsDNA, ssDNA, and RNA

- Replaces hazardous ethidium bromide (EtBr)
- Better sensitivity than EtBr (down to 0.1 ng)
- Excitation of both UV and blue light
- Ships at ambient temperature (store at 4°C)
- Two types: PS (Pre-Stain) or LD (Loading Dye)
- Compatible with SmartBlue Transilluminator

Image(s) are representative of the product group and not necessarily the individual product.

Order	28-Apr-2024 14:19: PM PDT	PRICES ARE SUBJECT TO CHANGE WITHOUT PRIOR NOTICE.					
Catalog	Item	Availability	Manufacturer	Mfg. Part #	NDC#	Your Price	Unit
375-10007-EA	SmartGlow Safe Green Pre-stain, 1.0 mL (20,000x) - 1 ea	Sign In	Benchmark Scientific	E4500-PS			EA
375-10010-EA	SmartGlow Loading Dye with Safe Green Stain, 1.0 mL (6x) - 1 ea		Benchmark Scientific	E4500-LD			EA

Shipping & Storage

Storage Information

4°C